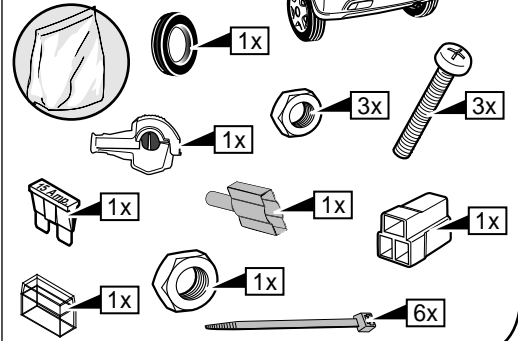
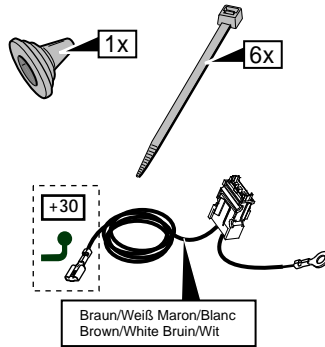
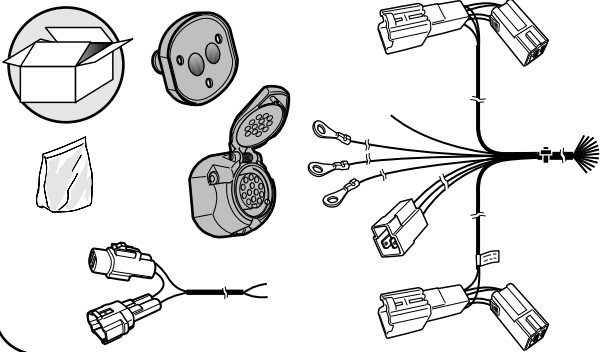
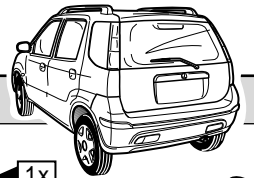


SUZUKI IGNIS 2003- & SUBARU JUSTY G3X

Nr.: SZ-016-DB

* Teilliste * Liste de pieces * Part list * Onderdelenlijst * Lista de componentes * Elenco componenti * Dellista



DE Wir weisen ausdrücklich darauf hin, das eine unsachgemäße und nicht in einer Fachwerkstätte durchgeführte Montage einen Verzicht auf die Geltendmachung jeglicher Art insbesondere auch aus dem Titel des Produkthaftpflichtrechtes bewirkt. Technische Änderungen vorbehalten. Belastung nur tabellgemäß auf dem Anhänger verwenden, siehe Seite 2.

FR Il est expressément prévu qu' on ne saurait se prévaloir d'un quelconque préjudice contractuel ou réhibitoire si le montage avait été fait en dépit des dites instructions ou dans un garage ne disposant pas des équipements adéquats. Sous réserve de modifications techniques. Ne excédez pas la charge maximale, indiquée dans le tableau sur page 2.

GB We would expressly point out that any improper assembly which is not carried out in a specialist workshop will result in the renunciation of the enforcement of compensation claims of any kind, in particular those arising by virtue of the product liability law. Subject to alteration without notice. Only use maximum charge according to connectiontable on towed vehicle, see page 2.



NL Wij wijzen er met nadruk op, dat ondeskundige en niet door een vakkundige werkplaats uitgevoerde montage tot gevolg heeft dat daardoor ieder recht op schadevergoeding, ook op wettelijke aansprakelijkheid inzake producten, vervalt. Technische wijzigingen voorbehouden. Gebruik alleen belasting volgens aansluittabel op het getrokken voertuig, zie pagina 2.

ES El montaje inapropiado y efectuado por personal no cualificado originará la pérdida de todo derecho a indemnización o la expiración de toda responsabilidad civil con respecto al producto. Nos reservamos el derecho a efectuar modificaciones técnicas. Utilice sólo cargas de acuerdo a la tabla de conexión del vehículo remolcado (ver página 2).

IT Sottolineiamo espressamente che un montaggio inadeguato ed eseguito da un'officina non specializzata ha come conseguenza il decadere di qualsiasi diritto al risarcimento danni, nonché alla responsabilità legale relativa ai prodotti. Ci si riserva il diritto di apportare modifiche tecniche. Utilizzare esclusivamente un carico conforme alla tabella degli allacci relativa al veicolo in questione, cfr. pagina 2.

SE Vi påpekar med eftertryck att all rätt till skadeersättning och all laglig ansvarighet förfaller om monteringen inte har utförts på rätt sätt och av en professionell verkstad. Tekniska ändringar förbehålles. Använd endast belastning enligt anslutningstabellen på det dragna fordonet, se sid. 2.

DE Einbauanleitung Elektrosatz Anhängervorrichtung mit 13-P Steckdose lt. DIN/ISO Norm 11446

FR Instructions de montage du faisceau électrique pour crochet d'attelage conforme à la norme DIN/ISO 11446 prise 13-P

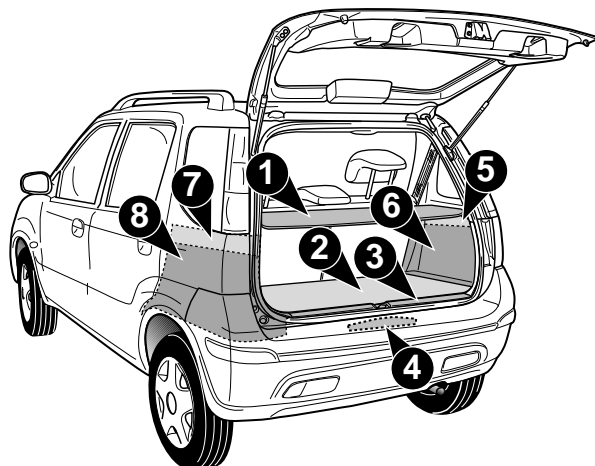
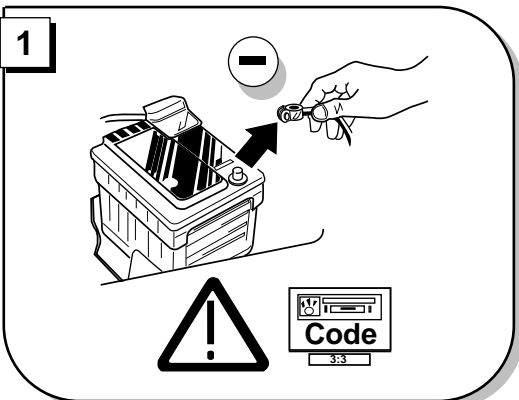
GB Fitting instructions electric wiringkit towbar with 13-P socket up to DIN/ISO norm 11446

NL Montage-handleiding elektrokabelset voor trekhaak met 13-P contactdoos vlg. DIN/ISO norm 11446

ES Instrucciones de montaje de juego de cables eléctricos para gancho de remolque con caja de conexiones 13-P según norma DIN/ISO 11446

IT Istruzioni di montaggio di set di cavi elettrici per gancio da traino con zoccolo a 13-P conforme alla norma DIN/ISO 11446

SE Monteringsanvisningar elkabelsats för dragkrok med 13-P kontaktbosa enligt DIN/ISO norm 11446



DE Abmontieren Teile

FR Démontez les parts

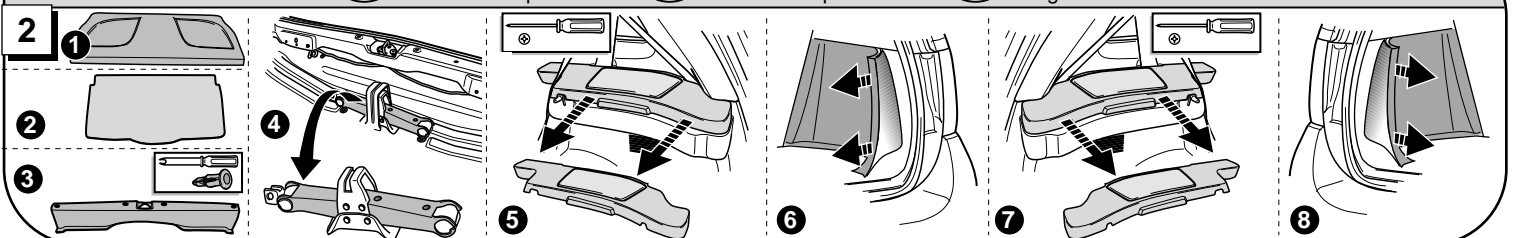
GB Remove linings

NL Verwijder onderdelen

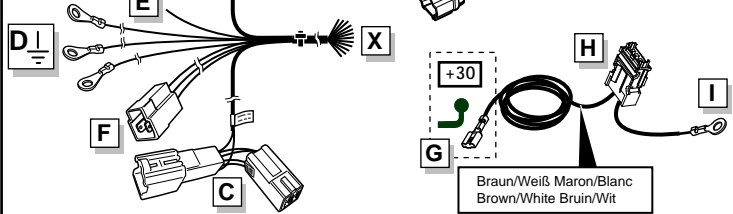
ES Remover componentes

IT Rimuovi componenti

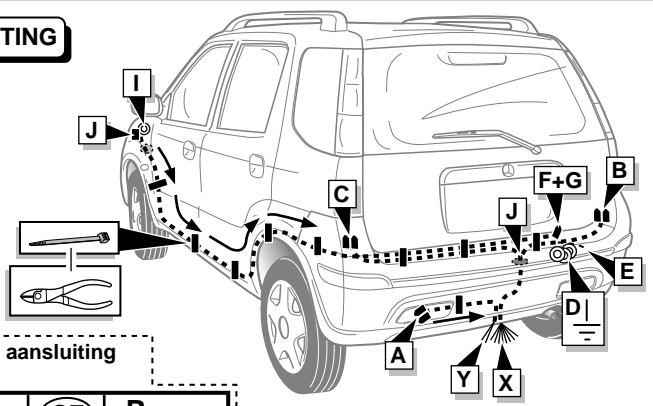
SE Avlägsna delar



INFO

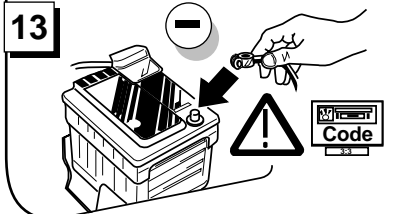
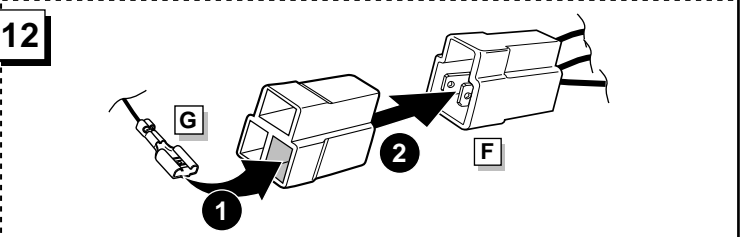
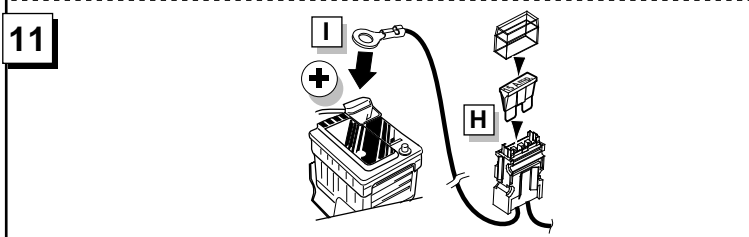
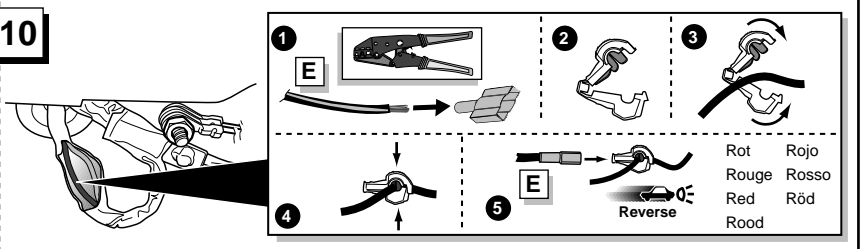
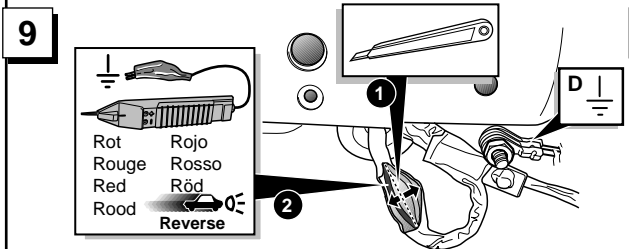
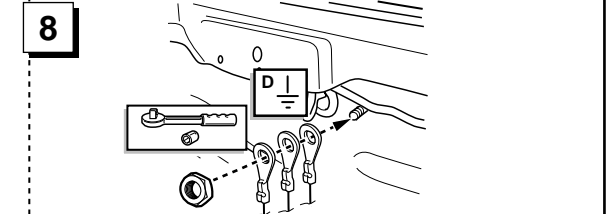
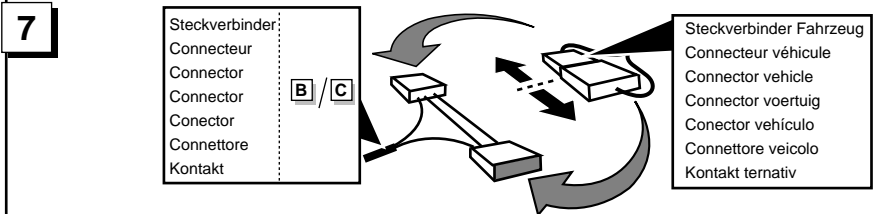
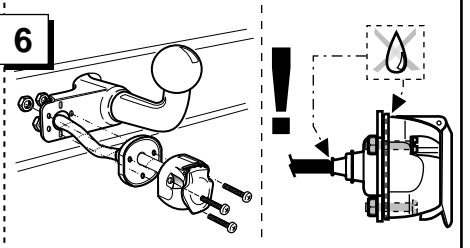
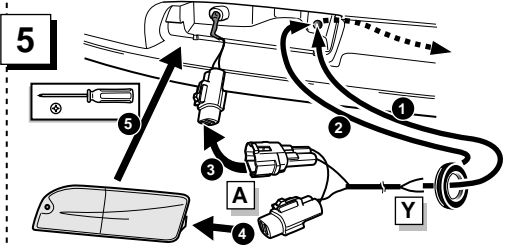
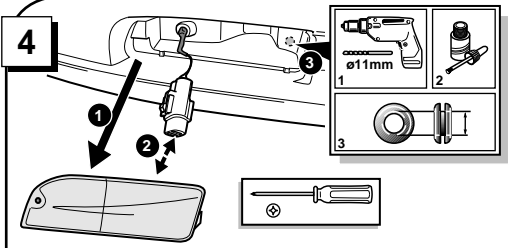
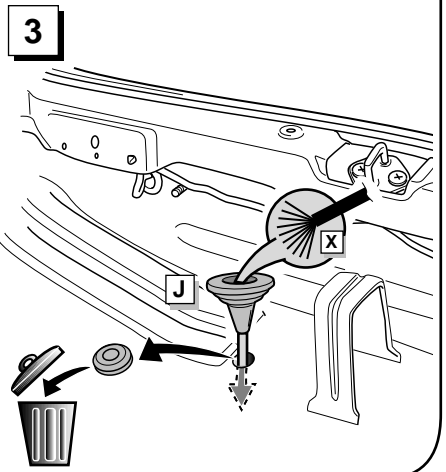


ROUTING



Anschluß Steckdose / Connection de la prise / Socket connection / Contactdoos aansluiting / Conexión de la caja de enchufe / Allaccio zoccolo / Anslutning kontaktdosa

| DIN/ISO 11446 | DE | FR | GB | NL | ES | IT | SE | Pmax | |
|---------------|--------|-------------|--------------|-------------|------------|---------------|----------------|-----------|--------------|
| | 1/L | gelb | jaune | yellow | geel | amarillo | giallo | gul | 21W |
| | 2 | blau | bleu | blue | blauw | azul | blu | blå | 2x21W |
| | 2a | grau | gris | grey | grijs | gris | grigio | grå | |
| | 1-8 | 3/31 | weiß | blanc | white | wit | blanco | bianco | vit |
| | 4/R | grün | vert | green | groen | verde | verde | grön | 21W |
| | 5/58-R | braun | marron | brown | bruin | marrón | marrone | brun | 52W |
| | 6/54 | rot | rouge | red | rood | rojo | rosso | röd | 3x21W |
| | 7/58-L | schwarz | noir | black | zwart | negro | nero | svart | 52W |
| | 8 | schwarz/rot | noir/rouge | black/red | zwart/rood | negro/rojo | nero/rosso | svart/röd | 2x21W |
| | 9 | braun/weiß | marron/blanc | brown/white | bruin/wit | marrón/blanco | marrone/bianco | brun/vit | 180W / 15Amp |
| | 10 | rot | rouge | red | rood | rojo | rosso | röd | 180W / 15Amp |
| | 10 | 11 | weiß | blanc | white | wit | blanco | bianco | vit |
| | 12 | rot/blau | rouge/bleu | red/blue | rood/blauw | rojo/azul | rosso/blu | röd/blå | |
| | 9 | 13 | weiß | blanc | white | wit | blanco | bianco | vit |



- DE** FUNKTIONEN KONTROLLIEREN !
- FR** CONTRÔLER LES FONCTIONS !
- GB** CHECK FUNCTIONS !
- NL** CONTROLEER FUNCTIES !
- ES** ¡CONTROLAR FUNCIONES!
- IT** CONTROLLA FUNZIONI!
- SE** KONTROLLERA FUNKTIONERNA!

- DE** Zurück montieren Teile.
- FR** Montez les part enlèves.
- GB** Reinstall linings.
- NL** Terug plaatsen onderdelen.
- ES** Reinstalar componentes.
- IT** Rimetti a posto componenti.
- SE** Sätt tillbaka delar.