

**Instructions de montage du faisceau
électrique pour crochet d'attelage
conforme à la norme
DIN/ISO 11446 prise 13-P**

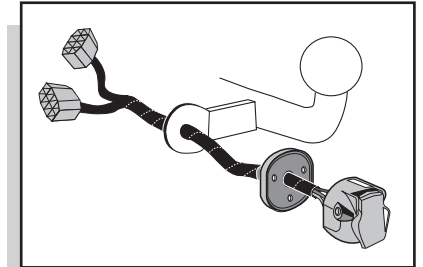
**Fitting instructions electric wiringkit
towbar with 13-P socket up to
DIN/ISO norm 11446**

**Montage-handleiding elektrokabelset voor
trekhaak met 13-P contactdoos
vlg. DIN/ISO norm 11446**

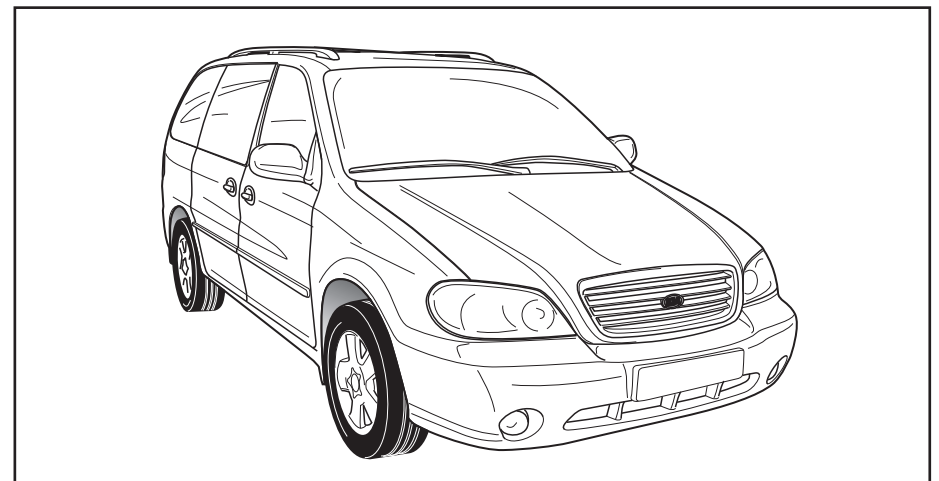
**Instrucciones de montaje de juego de cables
eléctricos para gancho de remolque con caja de
conexiones 13-P según norma DIN/ISO 11446**

**Istruzioni di montaggio di set di cavi elettrici per
gancio da traino con zoccolo a 13-P conforme alla
norma DIN/ISO 11446**

**Monteringsanvisningar elkabelsats för dragkrok
med 13-P kontaktdosa enligt DIN/ISO norm 11446**



KIA CARNIVAL 1999- / -2002 KIA CARNIVAL 2004-



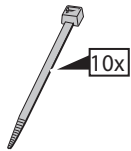
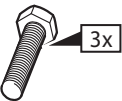
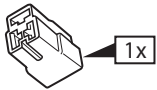
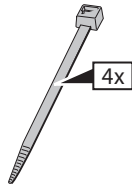
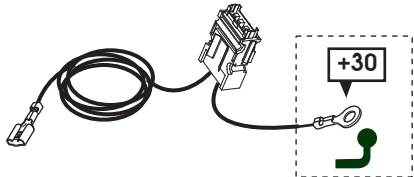
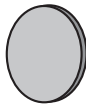
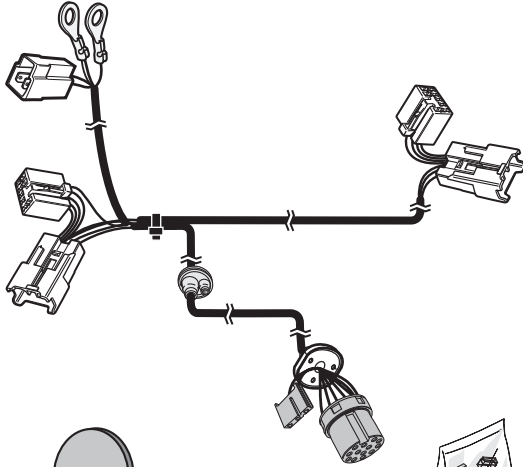
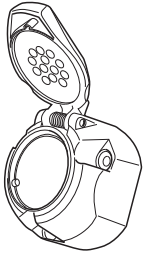
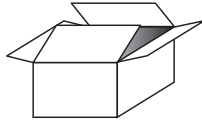
Bestel Nr.: KI-027-HB

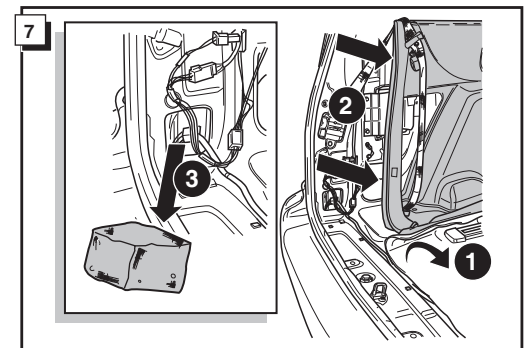
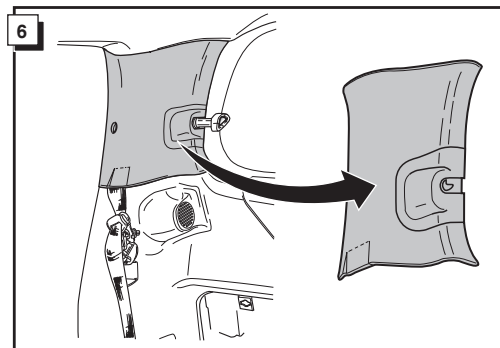
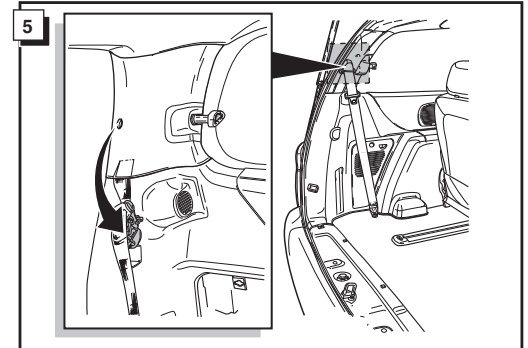
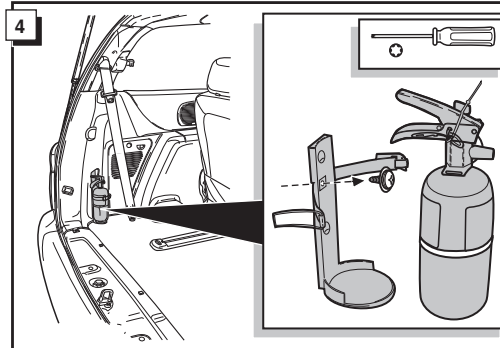
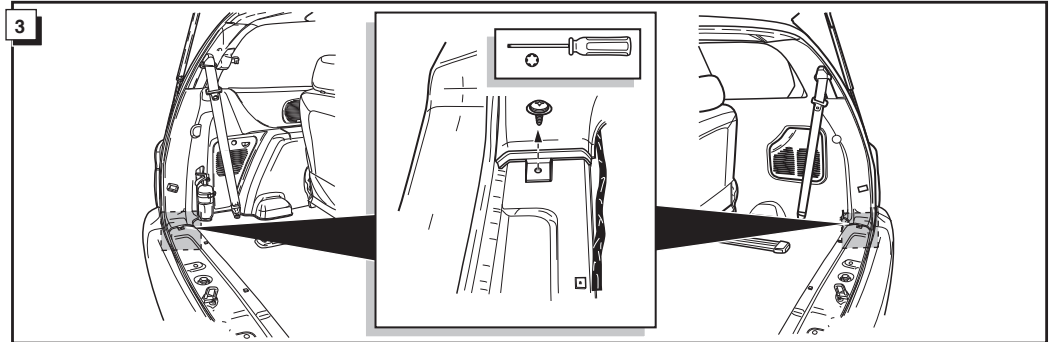
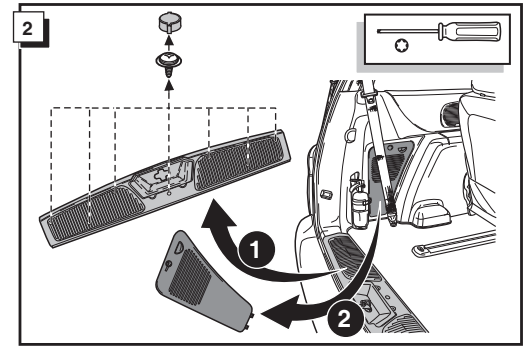
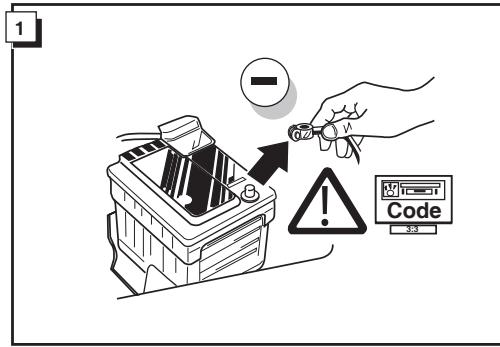
* Teilliste

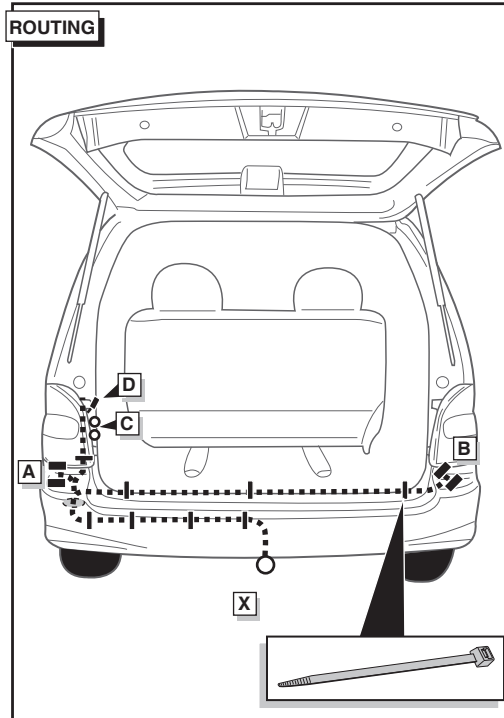
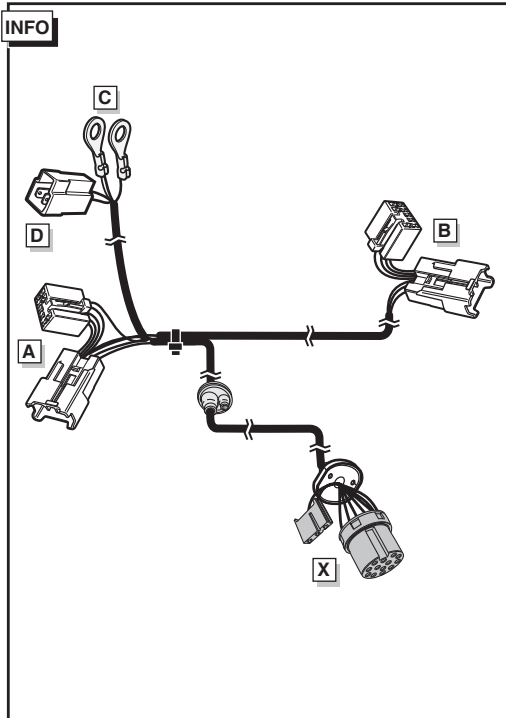
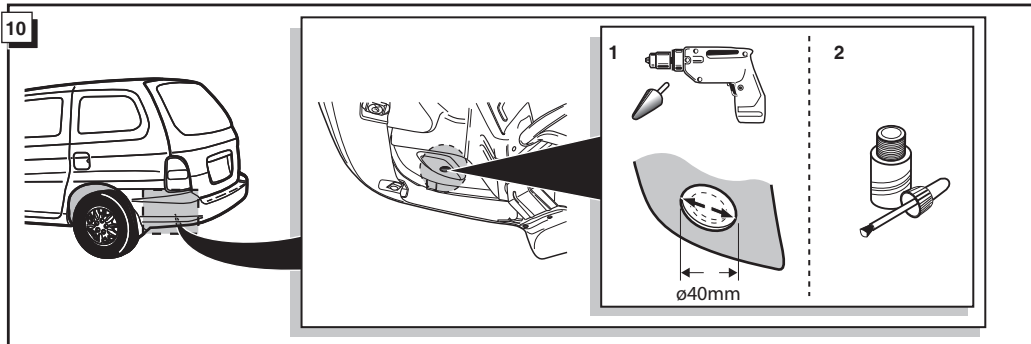
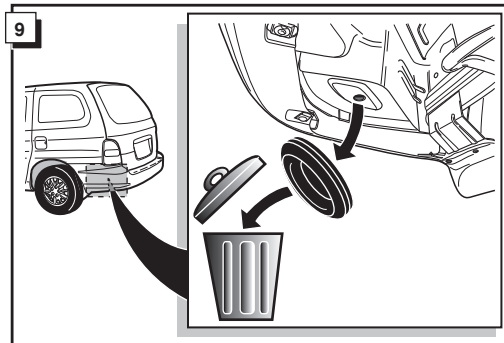
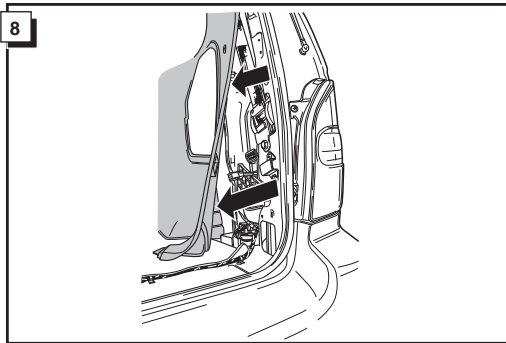
* Liste de pieces

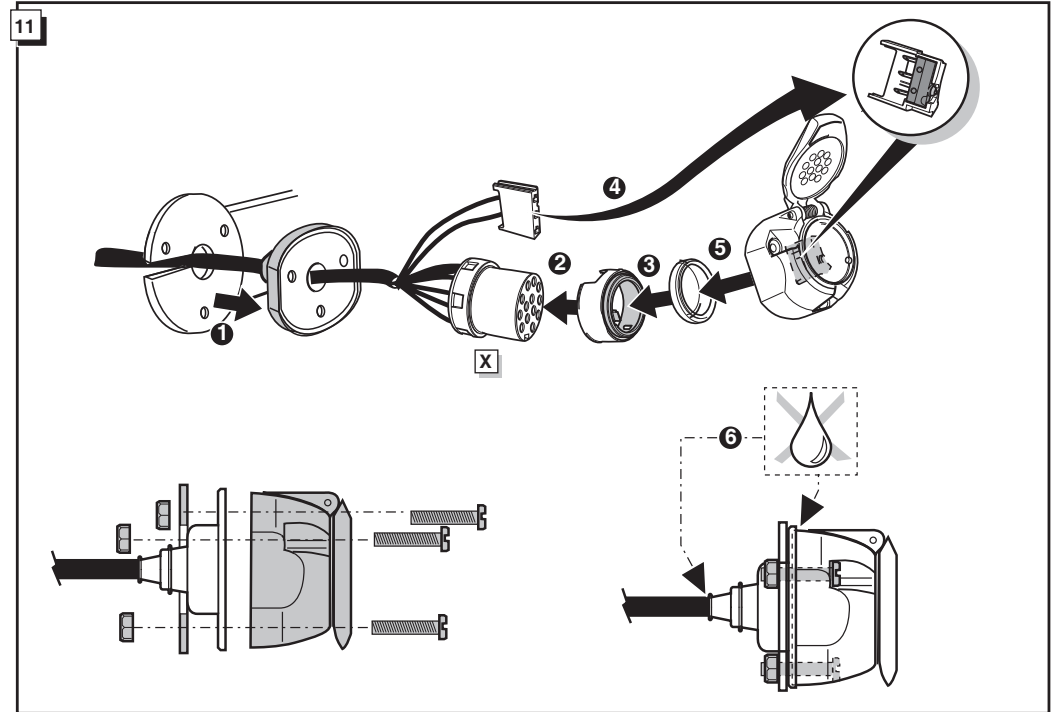
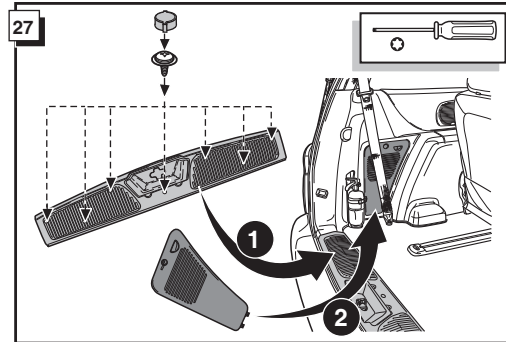
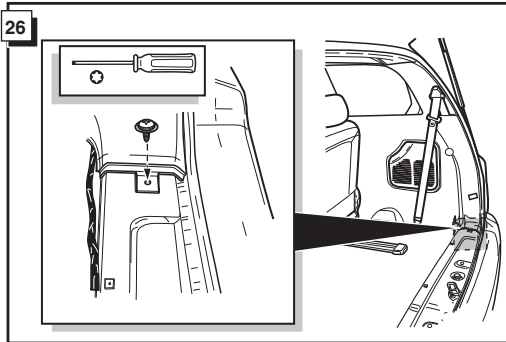
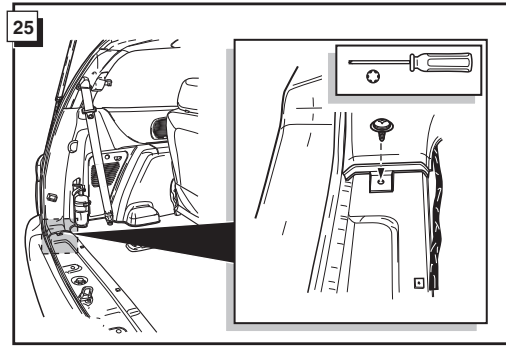
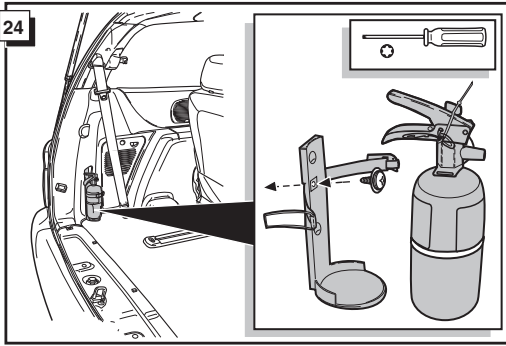
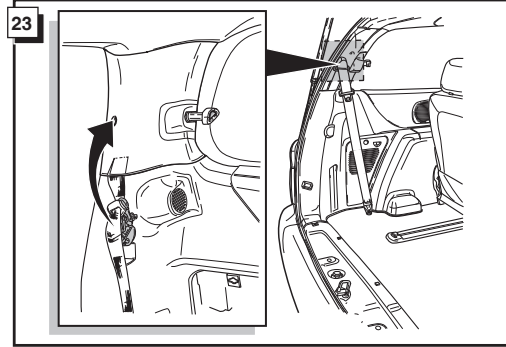
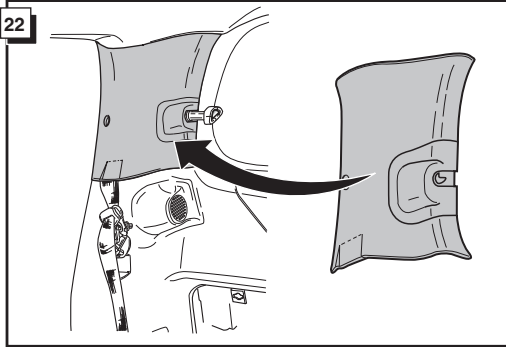
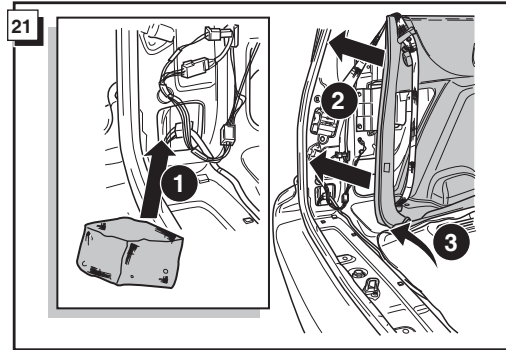
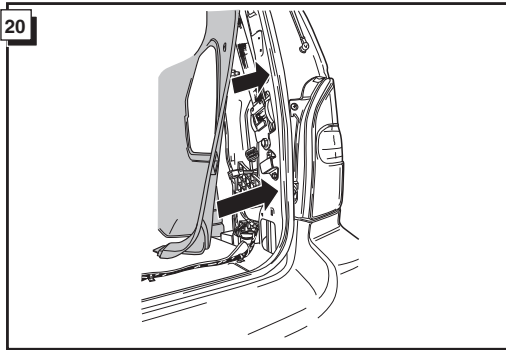
* Part list

* Onderdelenlijst



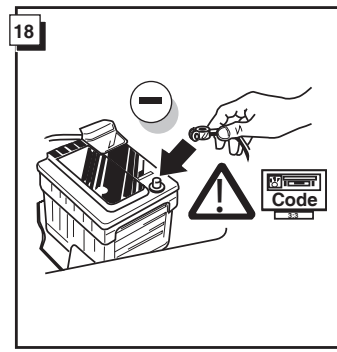
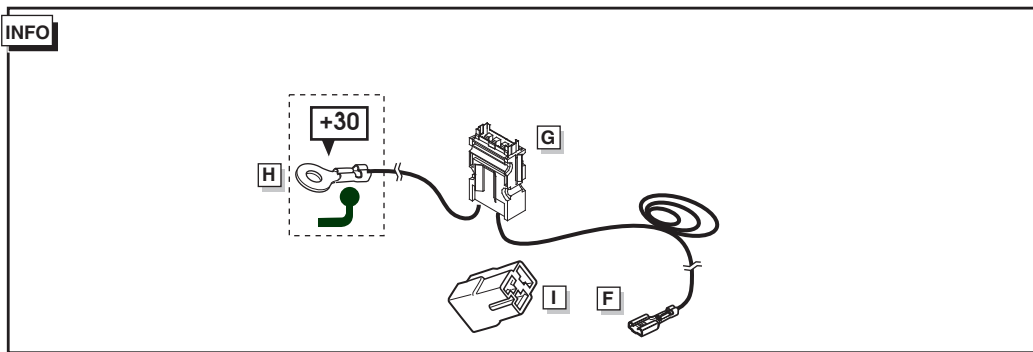
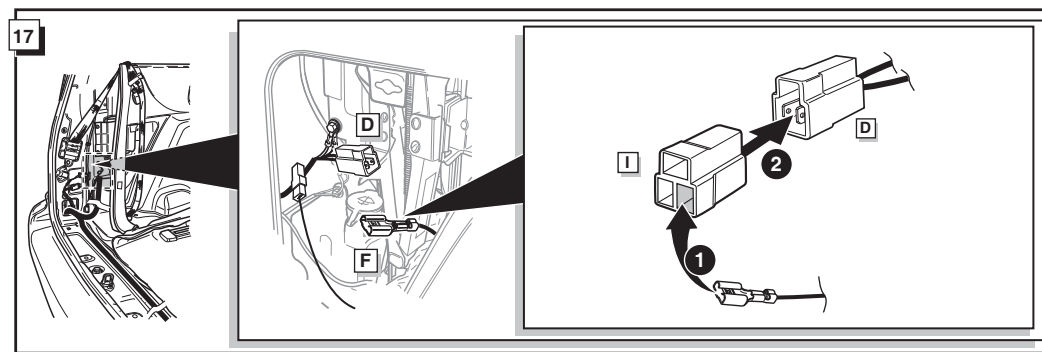
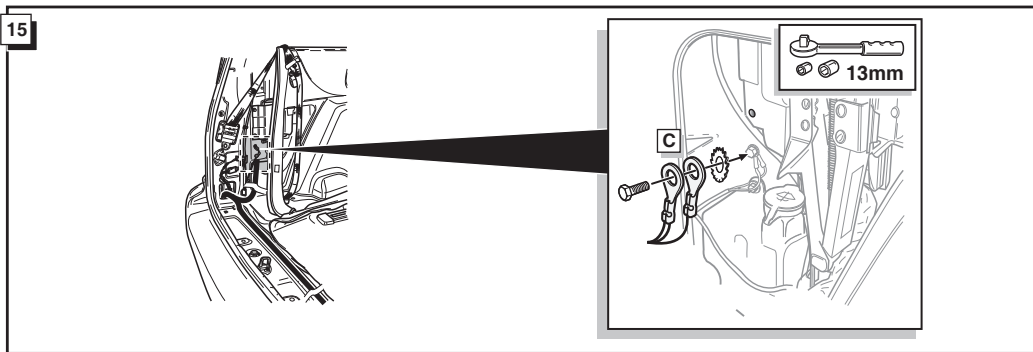
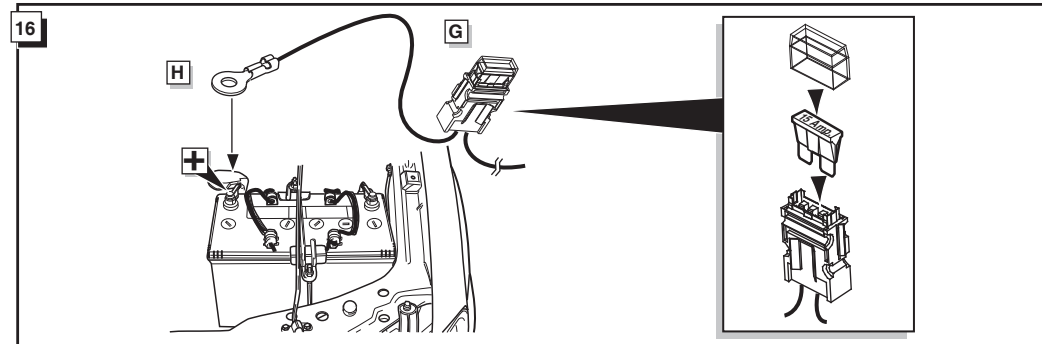
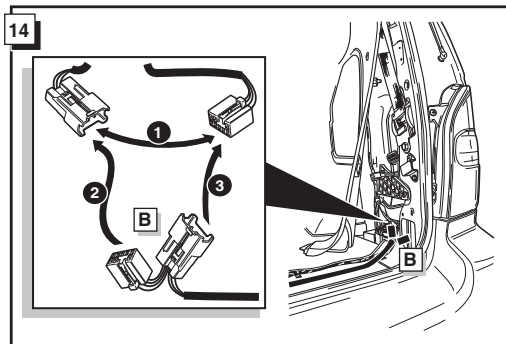
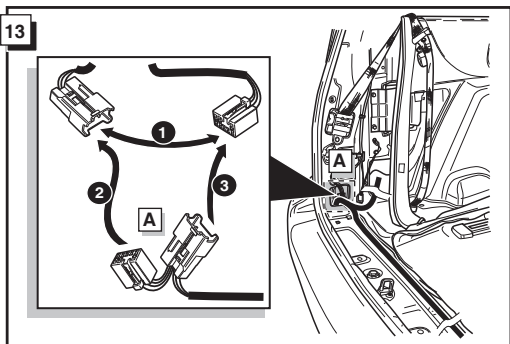
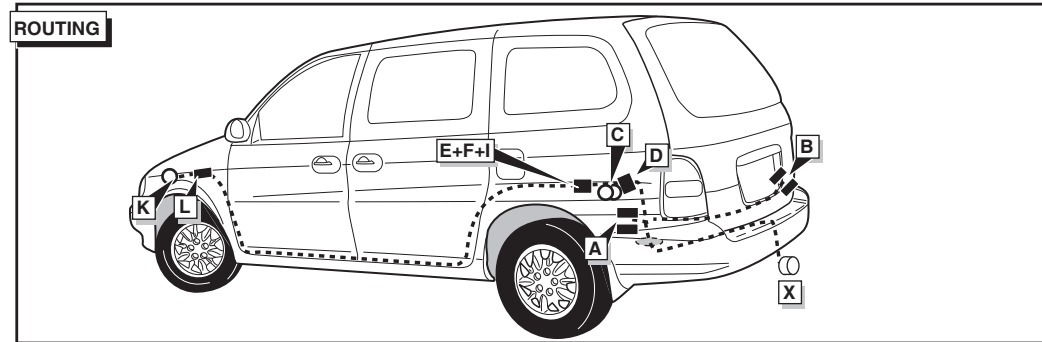
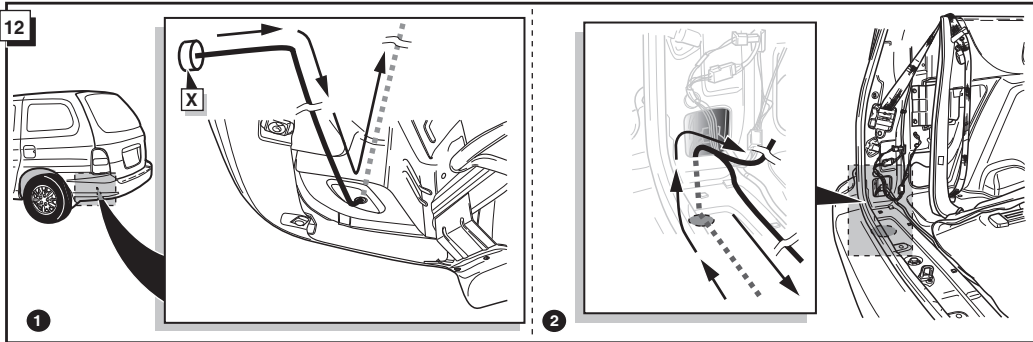






INFO Anschluß Steckdose / Connection de la prise / Socket connection / Contactdoos aansluiting
 Conexión de la caja de enchufe / Allaccio zoccolo / Anslutning kontaktdosa

INFO									
DIN/ISO 11446	DE	FR	GB	NL	ES	IT	SE	P _{max}	
← 1/L	gelb	jaune	yellow	geel	amarillo	giallo	gul	21W	
↔ 2	blau	bleu	blue	blauw	azul	blu	blå	2x21W	
↔ 2a	grau	gris	grey	grijs	gris	grigio	grå		
⊥ 1-8	weiß	blanc	white	wit	blanco	bianco	vit		
→ 4/R	grün	vert	green	groen	verde	verde	grön	21W	
☀ 5/58-R	braun	marron	brown	bruin	marrón	marrone	brun	52W	
⊖ 6/54	rot	rouge	red	rood	rojo	rosso	röd	3x21W	
☀ 7/58-L	schwarz	noir	black	zwart	negro	nero	svart	52W	
Reverse 8	schwarz/rot	noir/rouge	black/red	zwart/rood	negro/rojo	nero/rosso	svart/röd	2x21W	
30+ 9	braun/weiß	marron/blanc	brown/white	bruin/wit	marrón/blanco	marrone/bianco	brun/vit	180W / 15Amp	
15+ 10	rot	rouge	red	rood	rojo	rosso	röd	180W / 15Amp	
⊥ 10	weiß	blanc	white	wit	blanco	bianco	vit		
↔ 12	rot/blau	rouge/bleu	red/blue	rood/blauw	rojo/azul	rosso/blu	röd/blå		
⊥ g	weiß	blanc	white	wit	blanco	bianco	vit		



19

FUNKTIONEN KONTROLLIEREN MIT EINEN TESTKASTEN MIT BELASTUNG ODER MIT LEUCHTEN MIT DER GENAUEN MENGE DES WATTS !

¡CONTROLAR FUNCIONES CON UN TESTER CON CARGA O LUCES CON EL CORRECTO VOLTAJE!

CONTRÔLER LES FONCTIONS AVEC UNE BOÎTE DE TEST AVEC DE LA CHARGE OU DES LAMPES AVEC LA QUANTITÉ CORRECTE DE WATT !

CONTROLLA FUNZIONI CON UN TESTER CON CARICO O LAMPADE DEL GIUSTO VOLTAGGIO!

KONTROLLERA FUNKTIONERNA MED EN TESTARE MED BELASTNING ELLER LAMPOR MED RÄTT WATT-VÄRDE!

CHECK FUNCTIONS WITH A TESTBOX WITH LOAD OR LAMPS WITH THE RIGHT AMOUNT OF WATT !

CONTROLEER FUNCTIES MET EEN TESTER MET BELASTING OF LAMPEN MET DE JUISTE WATTAGE !