

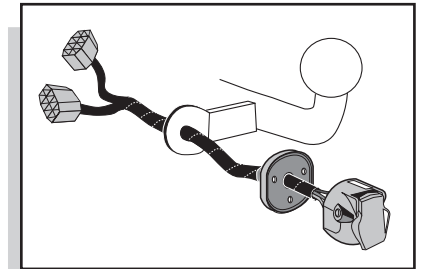
Einbauanleitung Elektrosatz
Anhängervorrichtung mit 13-N Steckdose
lt. DIN/ISO Norm 11446

Instructions de montage du faisceau
électrique pour crochet d'attelage
conforme à la norme
DIN/ISO 11446 prise 13-N

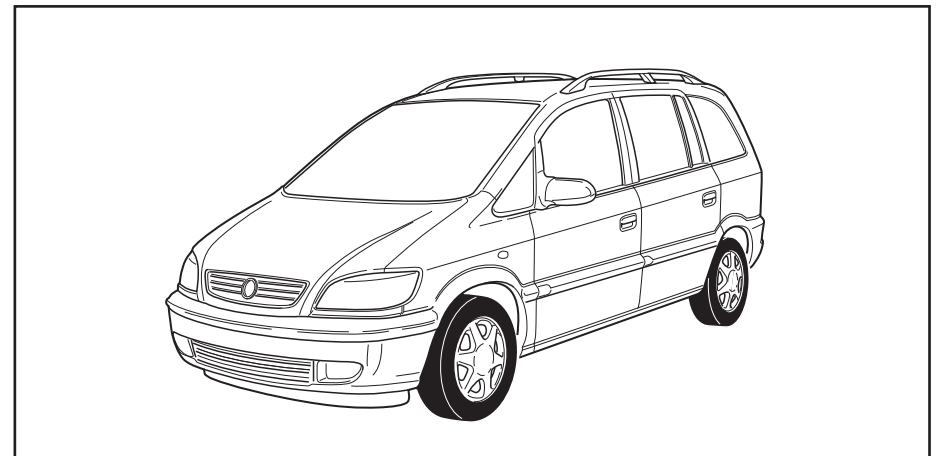
Fitting instructions electric wiringkit
towbar with 13-N socket up to
DIN/ISO norm 11446

Montage-handleiding elektrokabelset voor
trekhaak met 13-N contactdoos
vlg. DIN/ISO norm 11446

OP-009-BL 240500D



OPEL ZAFIRA 1999-



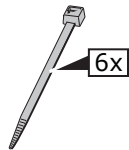
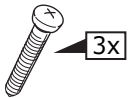
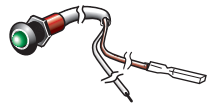
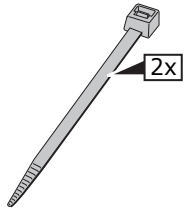
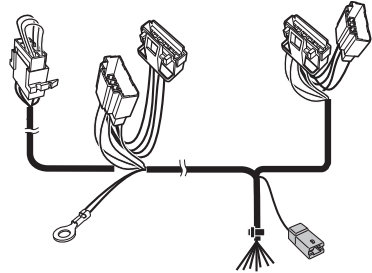
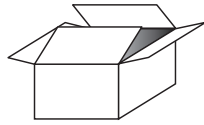
Bestel Nr.: OP-009-BL

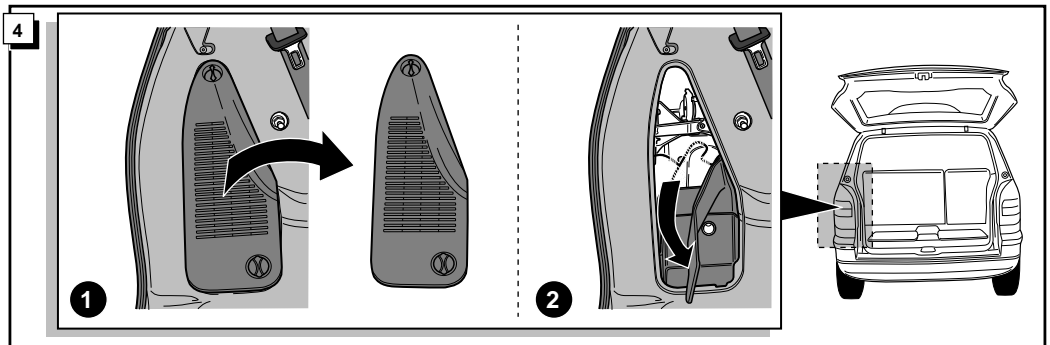
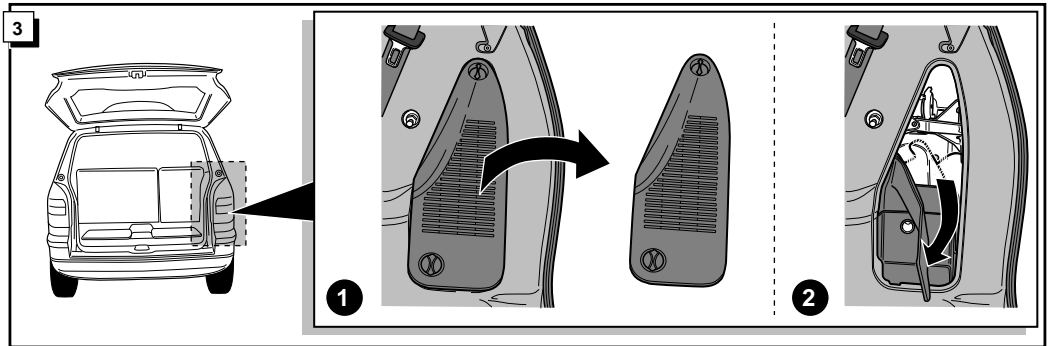
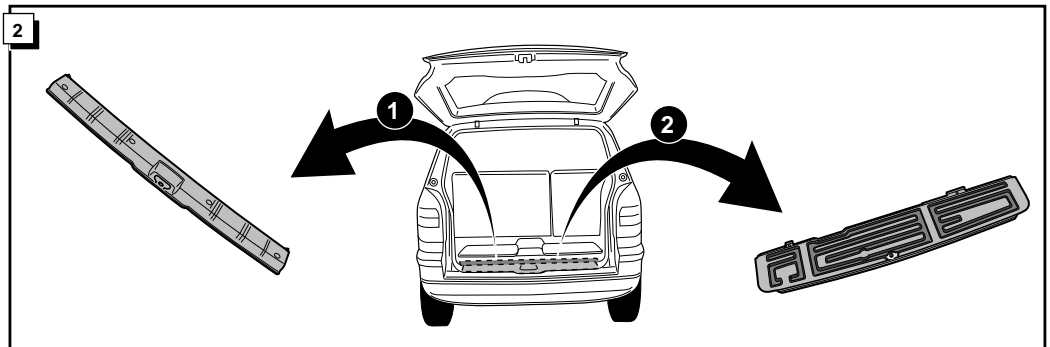
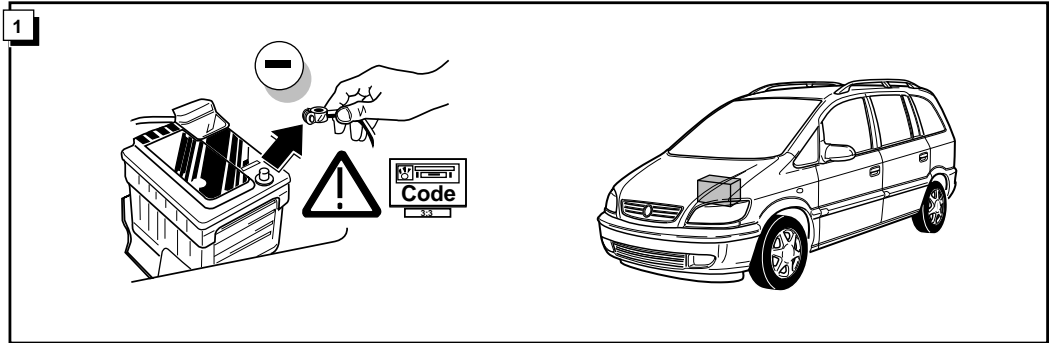
* Teilliste

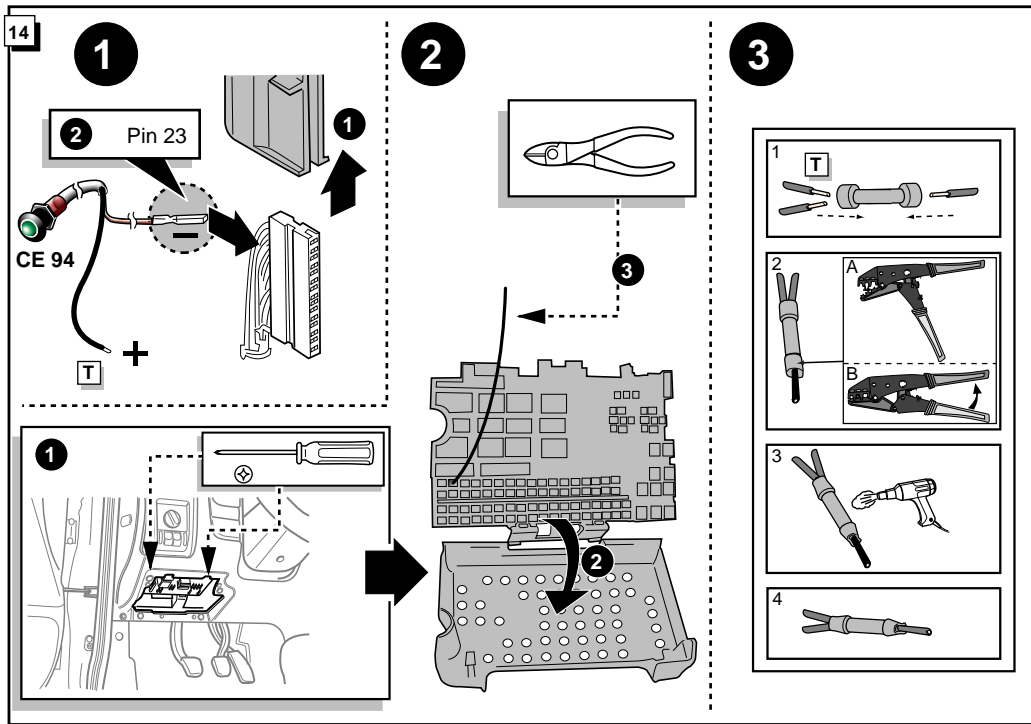
* Liste de pieces

* Part list

* Onderdelenlijst





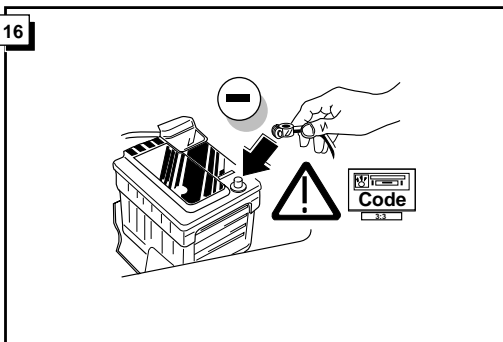
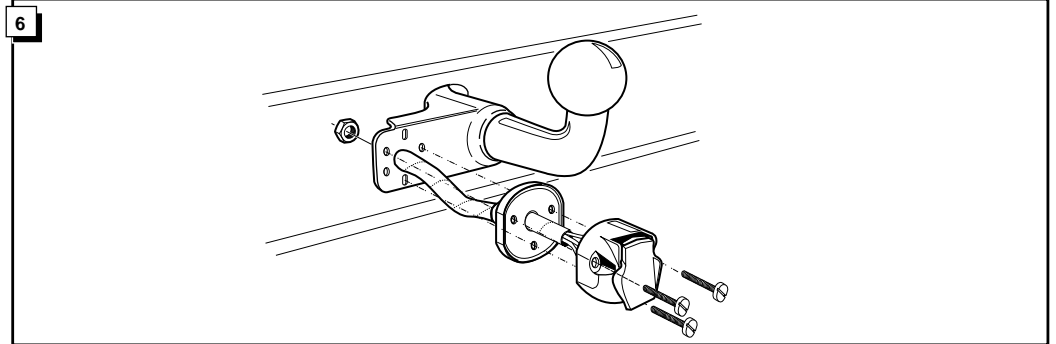


INFO Anschluß Steckdose / Connection de la prise / Socket connection / Contactdoos aansluiting

DIN/ISO 1724		D	F	GB	NL
←	1/L	gelb	jaune	yellow	geel
→	2	blau	bleu	blue	blauw
⊥	1-8	weiß	blanc	white	wit
→	4/R	grün	vert	green	groen
☀	5/58-R	braun	marron	brown	bruin
STOP	6/54	rot	rouge	red	rood
☀	7/58-L	schwarz	noir	black	zwart
⊥	8/58-b	grau	gris	grey	grijs

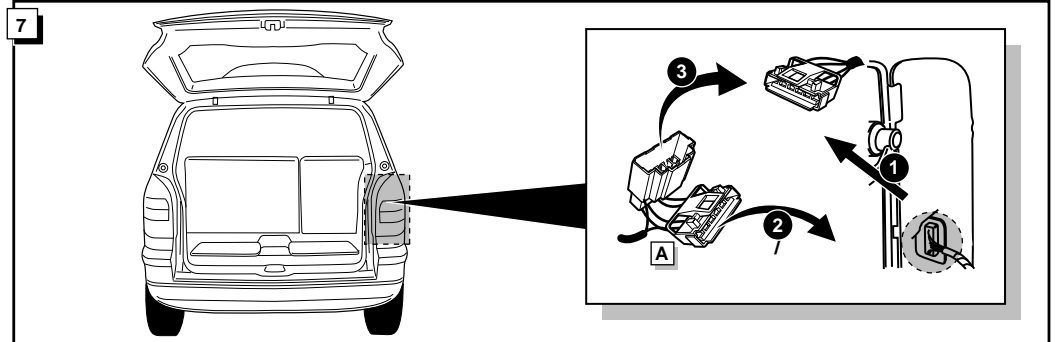
15

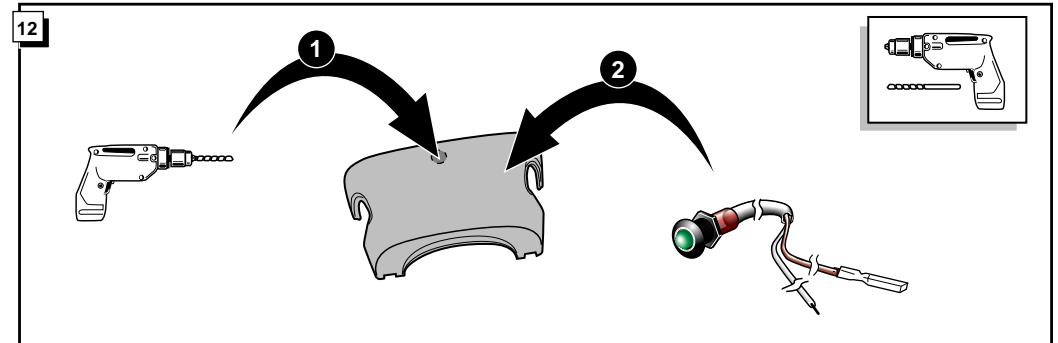
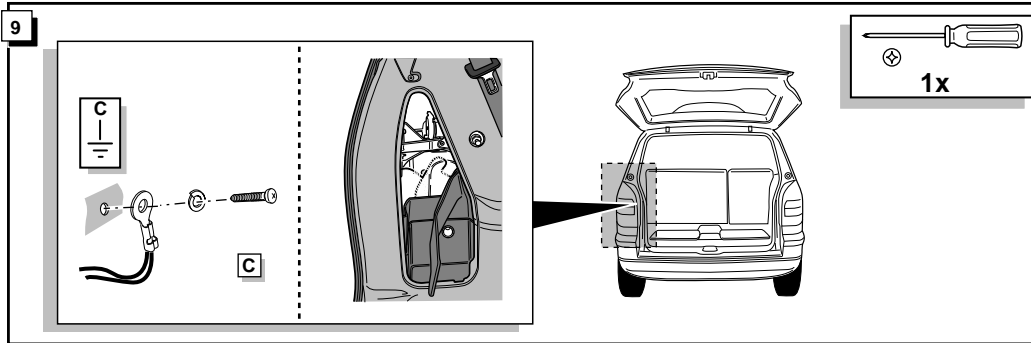
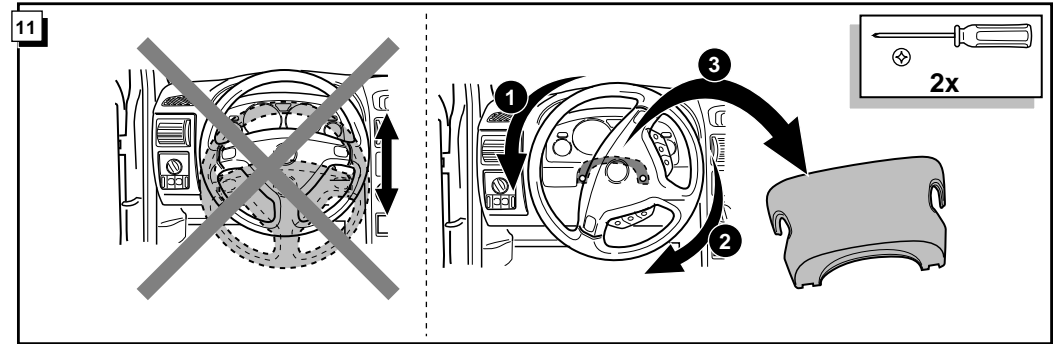
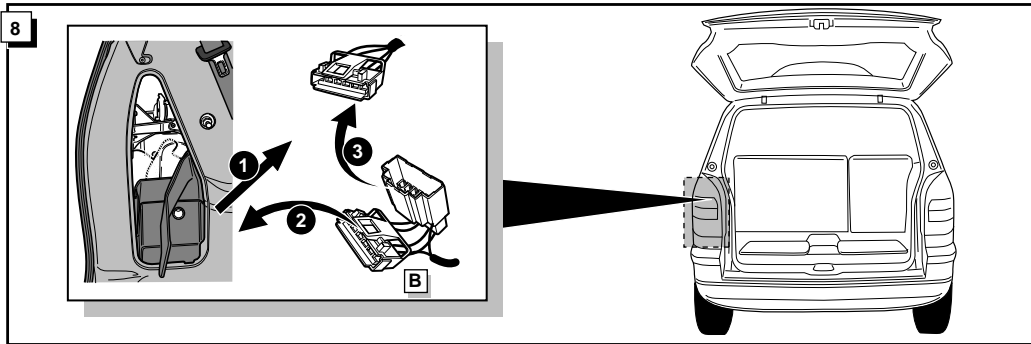
TROUBLESHOOTING	Pos. 23	Action
<input type="checkbox"/> Clear / Libre Frei / Vrij <input checked="" type="checkbox"/> Occupied / Occupé Besetzt / Bezet	<input type="checkbox"/>	Fit: Montez: Montiere: Monteer:
	<input checked="" type="checkbox"/> Disconnect first Libérer Zuerst freimachen Eerst vrij maken	Fit: Montez: Montiere: Monteer:



17

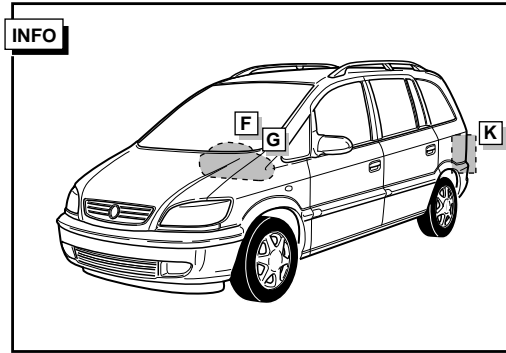
! FUNKTIONEN KONTROLIEREN !
! CONTRÔLER LES FONCTIONS !
! CHECK FUNCTIONS !
! CONTROLEER FUNCTIES !





10

- * Mit Check control: bei ihrem Lieferanten nach einem Erweiterungssatz informieren.
- * Avec check control: Informez chez votre fournisseur pour un faisceau d'extension.
- * With check control: contact your supplier for an extension kit.
- * Met check control: informeer bij uw leverancier naar een uitbreidingsset.



INFO

Erweiterungssatz für Fahrzeuge mit Check Control.
 Faisceau d'extension pour véhicules avec check control.
 Extension kit for vehicles with check control.
 Uitbreidingsset voor voertuigen met check control.

